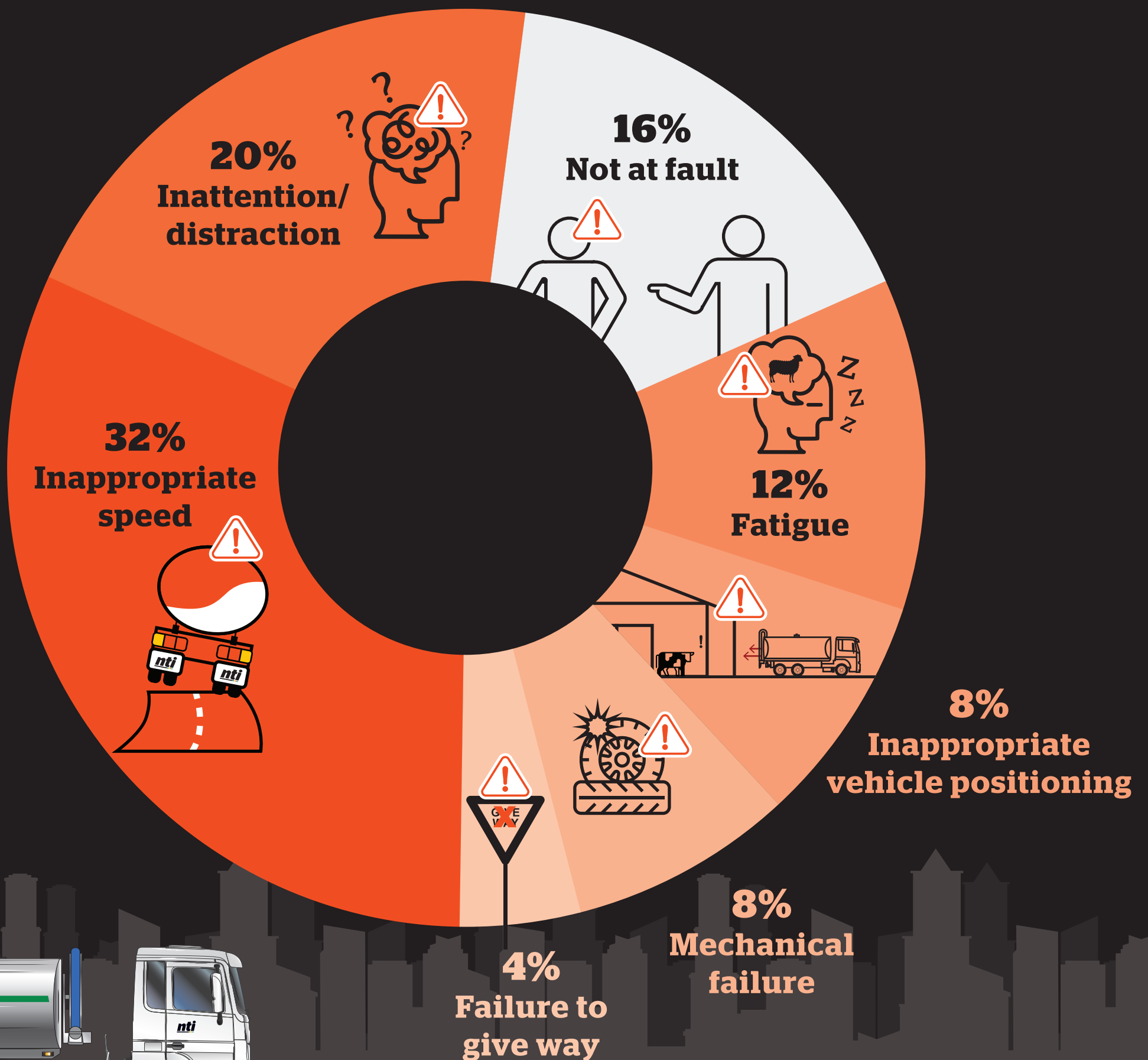


Dairy tankers have *different risks* to other unit types.



Source: NTI NTARC Major Crash Investigation 2022 Report

Take it easy, go slower and *get home safely.*

NTI's Spilt Milk Program is funded by the National Heavy Vehicle Regulator's Heavy Vehicle Safety Initiative, supported by the Australian Government, and presented by NTI Limited ABN 84 000 746 109 (NTI). This poster contains general information only and you should obtain your own professional advice based on your personal and business circumstances. NTI bears no responsibility, and shall not be held liable, for any loss, damage or injury arising directly or indirectly from your use of or reliance on the information in this poster.

nti